

Project :

File : ... \Výpočet - BUS zastávky.lpf

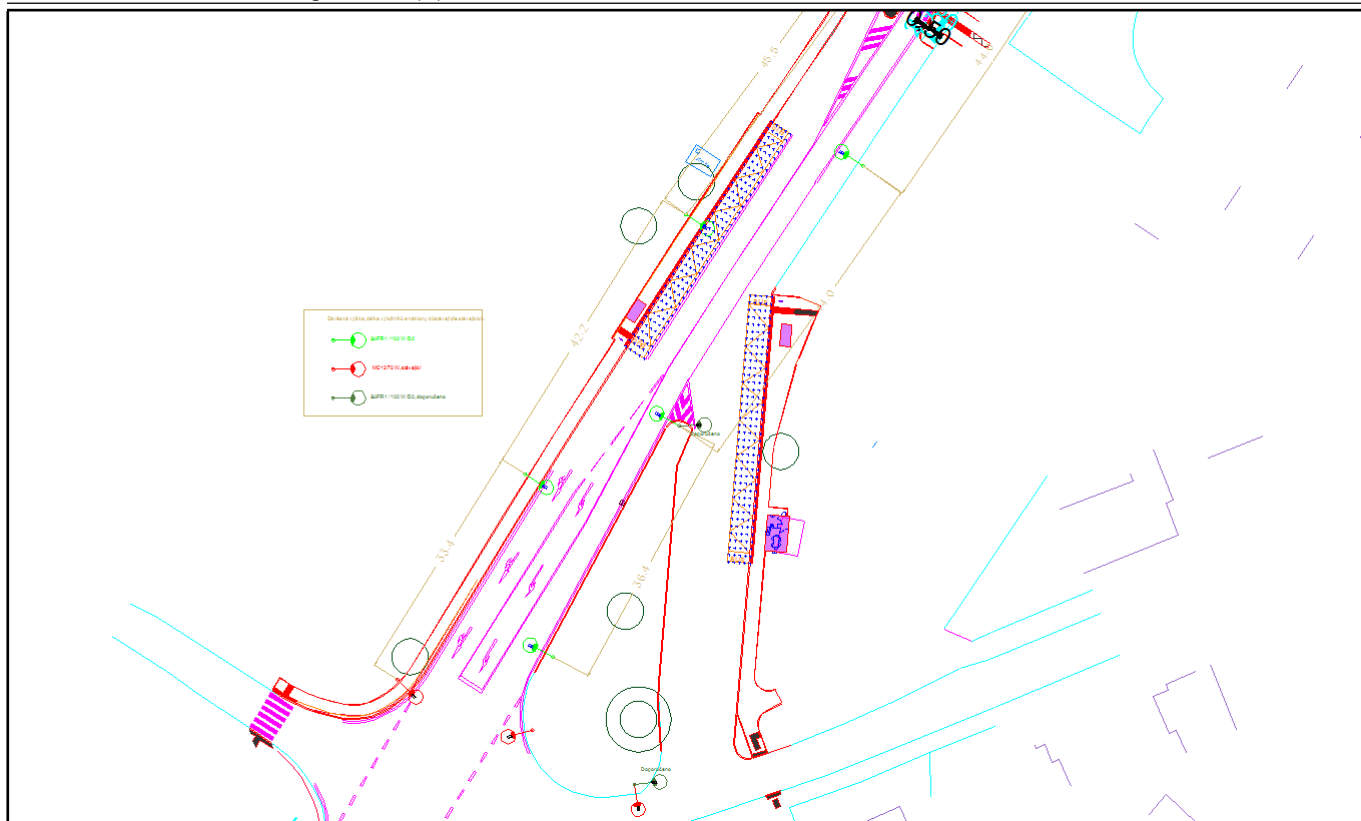
## Summary

### Grid summary

Average type : Arithmetic (A) or Weighted (W)

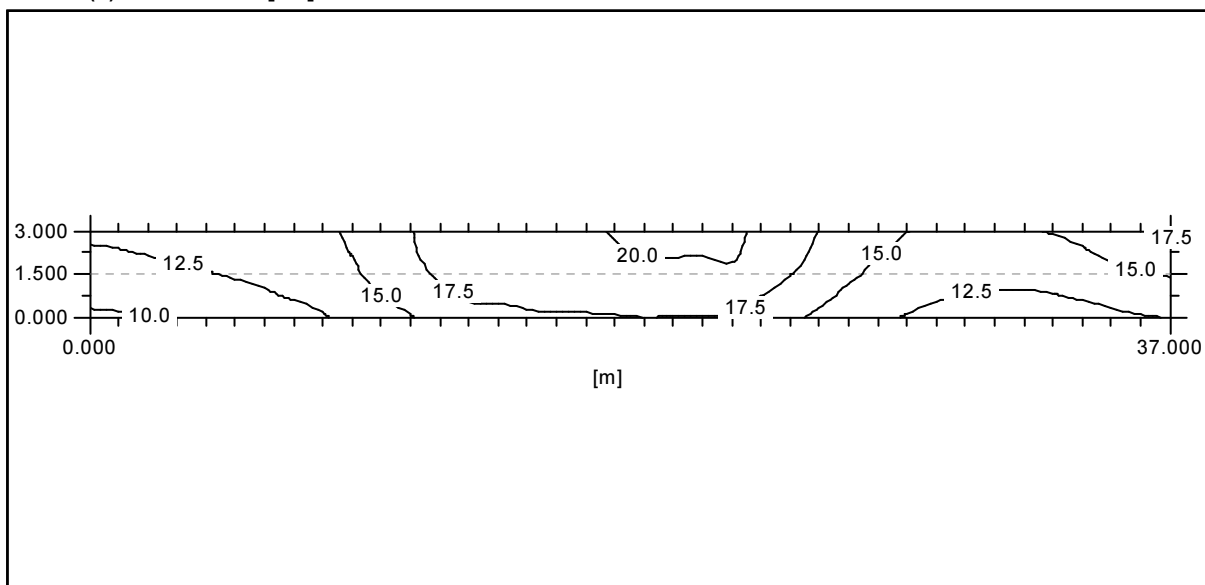
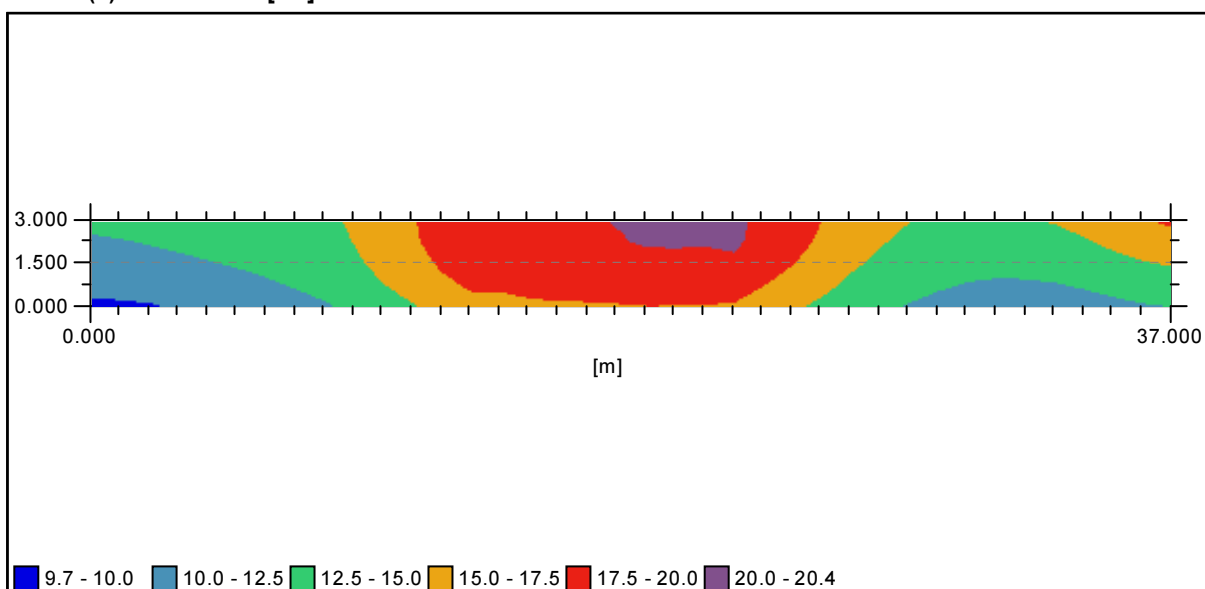
| BUS 1 (1)         | Min | Max  | Ave (A) | Min/Max | Min/Ave |
|-------------------|-----|------|---------|---------|---------|
| Illuminance (lux) | 9,7 | 20,4 | 15,4    | 47,3    | 62,8    |
| BUS 2 (2)         | Min | Max  | Ave (A) | Min/Max | Min/Ave |
| Illuminance (lux) | 3,4 | 13,4 | 8,1     | 25,7    | 42,3    |

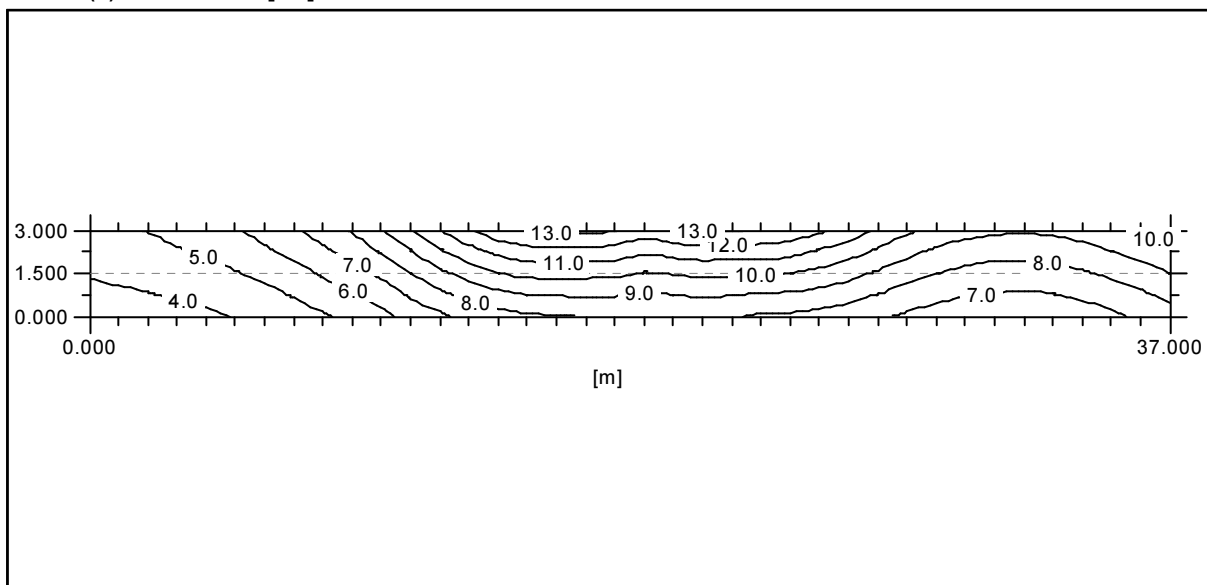
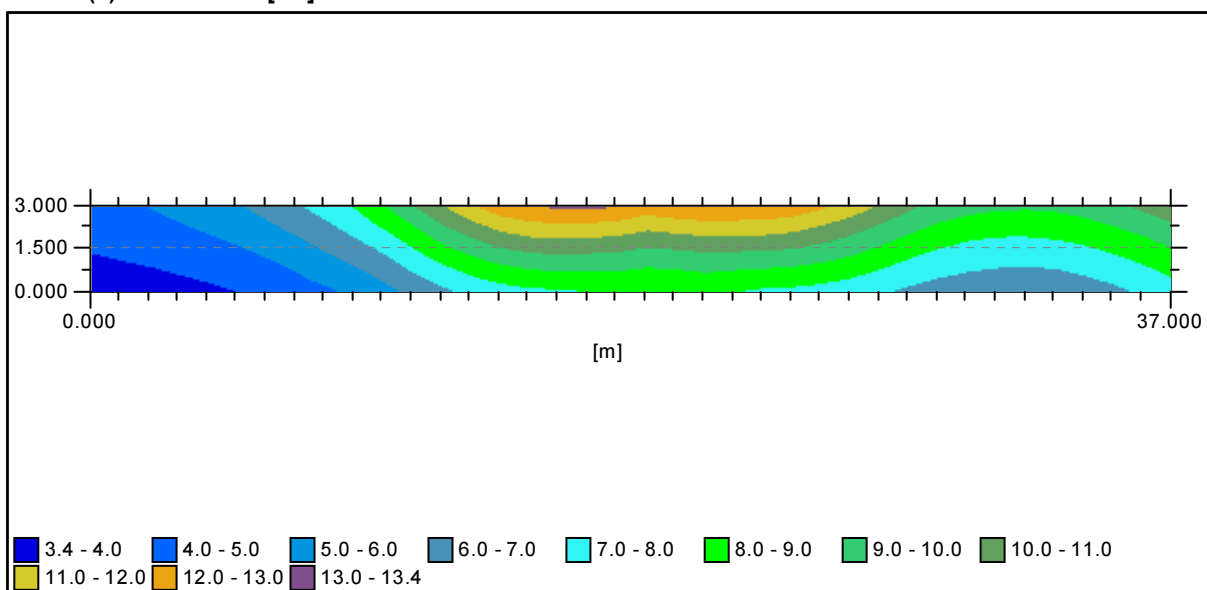
**Current view** Configuration (1)



**Grid results**

Average type : Arithmetic (A) or Weighted (W)

**BUS 1 (1) : Illuminance [lux]****BUS 1 (1) : Illuminance [lux]**

**BUS 2 (2) : Illuminance [lux]****BUS 2 (2) : Illuminance [lux]**

## General information

### Configuration details

#### • Configuration (1)

Activated ☒

| Matrix | Description            | Flux | MF   | Luminaire  |
|--------|------------------------|------|------|------------|
| 201113 | C:\Matrices\201113.mat | 10,7 | 0,83 | No Picture |
| 861364 | C:\Matrices\861364.mat | 6,6  | 0,83 | No Picture |

#### Group details

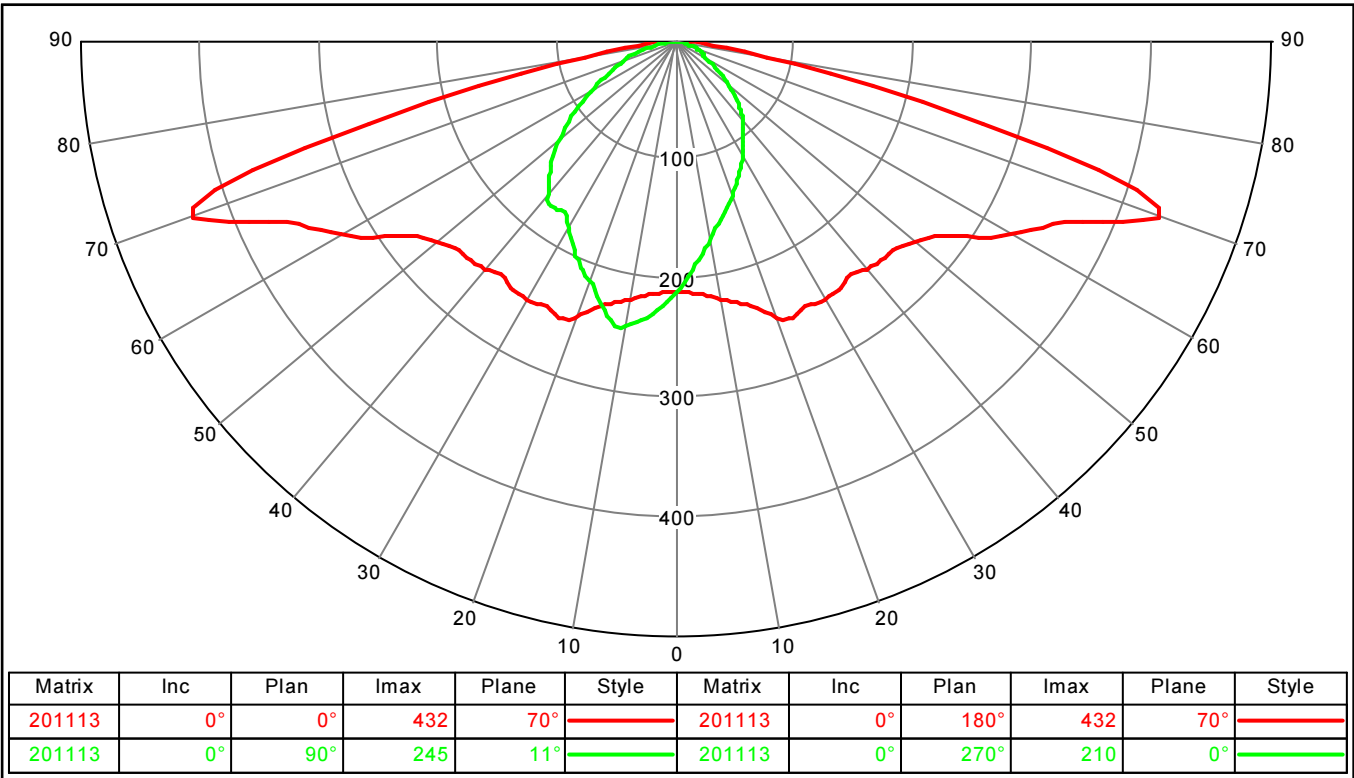
| Single |    |         |         |        |           |       |     |     |
|--------|----|---------|---------|--------|-----------|-------|-----|-----|
|        | N° | Start   |         |        | Luminaire |       |     |     |
|        |    | X       | Y       | H      | Matrix    | Az    | Inc | Rot |
| ✓      | 1  | 63,003  | 152,127 | 12,000 | 201113    | 125,0 | 0,0 | 0,0 |
| ✓      | 2  | 53,589  | 123,885 | 12,000 | 201113    | 304,0 | 0,0 | 0,0 |
| ✓      | 3  | 36,970  | 113,314 | 12,000 | 201113    | 123,0 | 0,0 | 0,0 |
| ✓      | 4  | 28,502  | 87,385  | 12,000 | 201113    | 303,0 | 0,0 | 0,0 |
| ✓      | 5  | 9,832   | 76,919  | 12,000 | 201113    | 123,0 | 0,0 | 0,0 |
| ✓      | 6  | 3,152   | 51,201  | 12,000 | 201113    | 302,0 | 0,0 | 0,0 |
| ✓      | 7  | -12,310 | 41,051  | 12,000 | 201113    | 121,0 | 0,0 | 0,0 |
| ✓      | 8  | -14,466 | 19,172  | 12,000 | 201113    | 300,0 | 0,0 | 0,0 |
| ✓      | 9  | -30,475 | 12,128  | 12,000 | 861364    | 137,0 | 0,0 | 0,0 |
| ✓      | 10 | -17,352 | 6,582   | 12,000 | 861364    | 253,0 | 0,0 | 0,0 |
| ✓      | 11 | -17,649 | -8,423  | 12,000 | 861364    | 0,0   | 0,0 | 0,0 |
| ✓      | 12 | -42,162 | -9,166  | 12,000 | 861364    | 118,0 | 0,0 | 0,0 |
| ✓      | 13 | -41,420 | -23,528 | 12,000 | 861364    | 310,0 | 0,0 | 0,0 |
| ✓      | 14 | -54,691 | -32,590 | 12,000 | 861364    | 119,0 | 0,0 | 0,0 |
| ✓      | 15 | 0,526   | -3,422  | 12,000 | 861364    | 170,0 | 0,0 | 0,0 |
| ✓      | 16 | 8,883   | 49,694  | 12,000 | 201113    | 88,3  | 0,0 | 0,0 |
| ✓      | 17 | 2,779   | 0,284   | 12,000 | 201113    | 84,7  | 0,0 | 0,0 |

Photometric documents

201113

C:\Matrices\201113.mat

Polar / Cartesian diagram



861364

C:\Matrices\861364.mat

Polar / Cartesian diagram

